



**Planning for sustainable  
groundwater resources:  
something's got to give!**

Natural History Museum, London

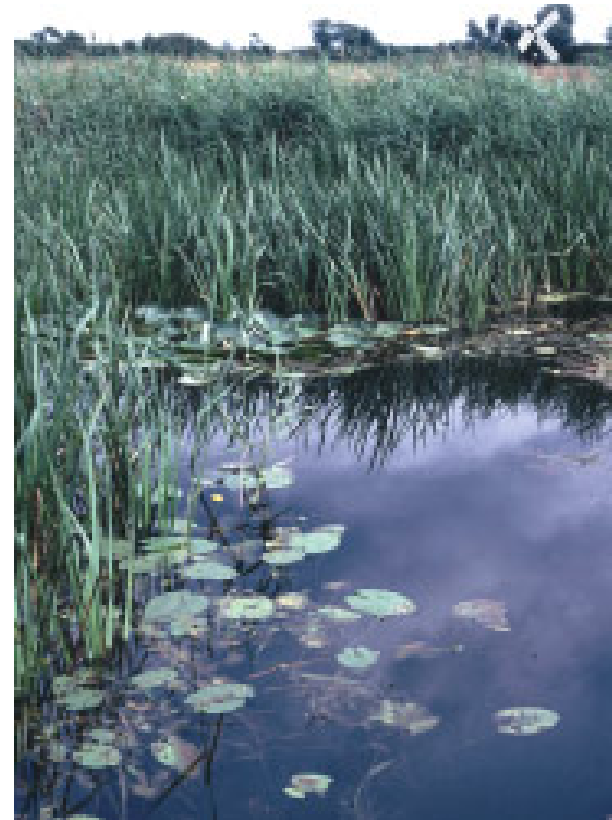
30 March 2006

# UK Groundwater Forum



# UK Groundwater Forum

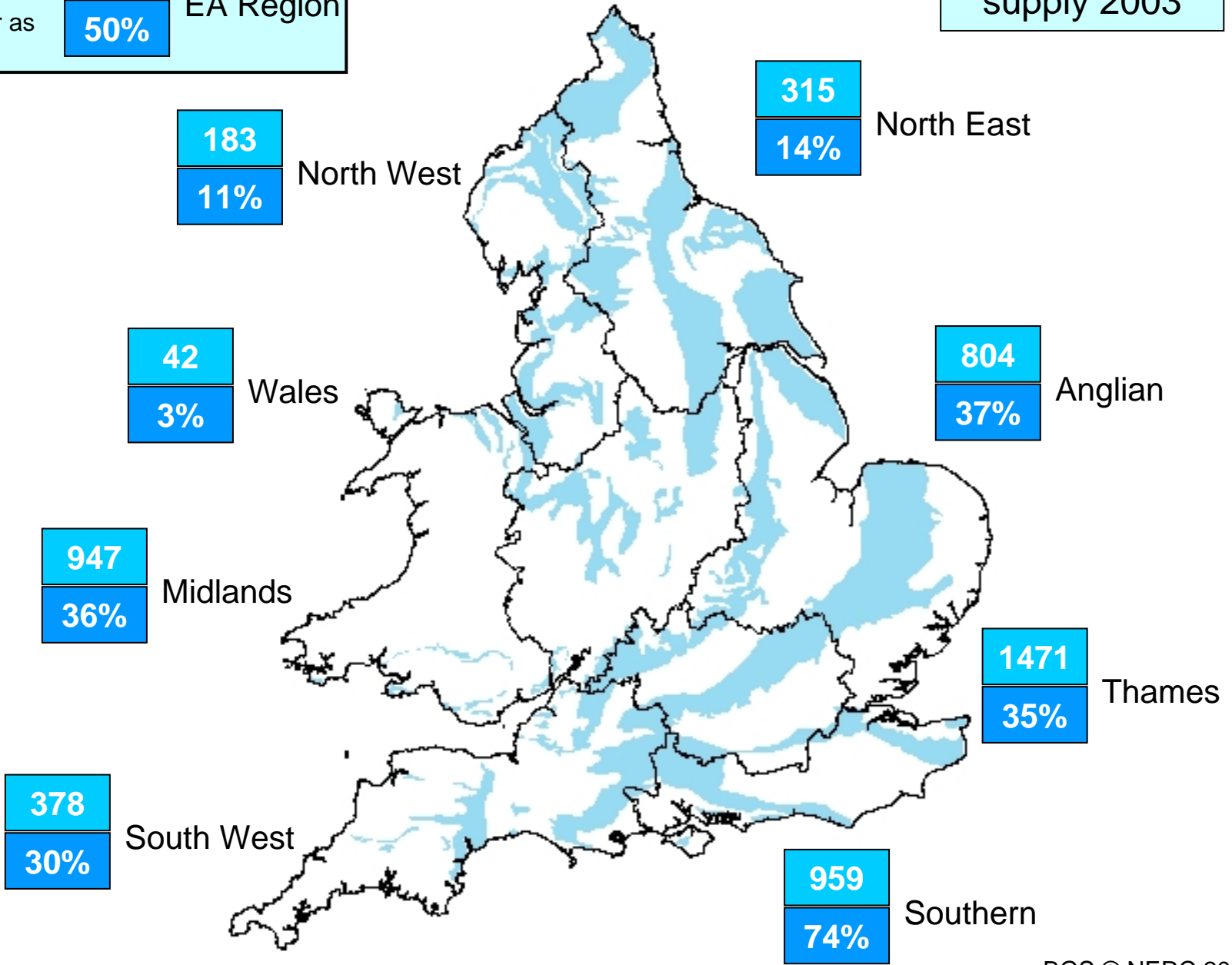
- Lowland rivers depend on groundwater to maintain their flows during summer months
- Groundwater quality has a major influence on river water quality
- Large proportion of our wetlands are groundwater dependent



Mike Acreman, CEH © NERC 2000

Groundwater abstraction (MI/d)	<b>500</b>	EA Region
Groundwater as % of PWS	<b>50%</b>	

Public water supply 2003





- Increasing pressures on groundwater resources – demand, deteriorating groundwater quality, etc
- Greater protection for the environment (WFD, HD)
- There may not be enough water to go round

Something's got to give!



***Raising the awareness of groundwater in the UK***

Grouping of organisations within the groundwater community

- Water companies
- Environment regulators
- Research community
- Consultants

Run by a steering committee, supported by a Secretariat  
based at BGS-Wallingford

Entering last two years of a five year programme



## Forum Activities

- Provide information on groundwater targeted at specific groups such as decision makers, policy makers, professionals and schoolchildren
- Improve the teaching of groundwater in schools by providing educational resources, or links to existing resources
- Promote careers in groundwater-related professions
- Produce and disseminate information and facilitate discussion on topical groundwater issues within the water and environment community
- Provide a means for those in the water and environment community to share information



# www.groundwateruk.org



REGISTER ONLINE CONTACT US WHAT'S NEW

## The UK Groundwater Forum

- ABOUT THE FORUM
- GROUNDWATER BASICS
- GROUNDWATER IN DEPTH
- FAQ
- EDUCATION
- FORUM PRODUCTS
- USEFUL LINKS
- MEETINGS & EVENTS
- GROUNDWATER ISSUES
- GROUNDWATER NEWS
- HOME

### Raising awareness of groundwater in the UK

groundwater is a source of drinking water for millions of people in the UK

groundwater supports our rivers and wetlands and the plants and wildlife that exist in and around them

but groundwater is under threat from our increasing water needs, pollution and climate change



use this site to find out what you need to know about the issues that affect groundwater in the UK

Next Forum [open meeting](#) on 30th March 2006



Raising awareness of groundwater in the UK

Copyright statement and disclaimer. Site by [Samui Design & Management Ltd](#)





### **Morning Session: the pressures**

- 10.00 – 10.10 Introduction  
*Denis Peach, Chair of the UK Groundwater Forum*
- 10.10 – 10.35 The status of groundwater resources and the groundwater needs of the environment  
*John Aldrick, Environment Agency*
- 10.35 – 10.55 Benefit valuation of groundwater  
*Camille Bann, Environment Agency*
- 10.55 – 11.20 Changing population demands: the implications for water supply planning  
*Kate Stapleton, Sustainable Communities Division, Office of the Deputy Prime Minister*
- 11.20 – 11.45 Groundwater-related supply problems being faced by the water industry  
*Mike Pocock, Water UK*
- 11.45 – 12.10 Pressures on groundwater resources  
*Denis Peach, Groundwater Programme Manager, British Geological Survey*
- 12.10 – 12.30 Discussion
- 12.30 – 13.30 *Lunch*

### **Afternoon Session: the solutions?**

- 13.30 – 13.55 Understanding our groundwater systems – gaps in knowledge needed for planning  
*Howard Wheeler, Imperial College London*
- 13.55 – 14.20 Options for sustainable water management  
*Louise Heathwaite, Centre for Sustainable Water Management, University of Lancaster*
- 14.20 – 14.45 Sustainability reductions in groundwater abstraction  
*Dave Harker, Anglian Water*
- 14.45 – 15:05 *Afternoon tea and coffee*
- 15:05 – 15.25 Supply demand strategy and regional spatial strategy planning  
*Meyrick Gough, Southern Water*
- 15:25 – 15.45 Impact of bromate contamination in north London  
*Phil Bishop, Thames Water*
- 15.45 – 16.10 Summing up  
*Andrew Skinner, Consultant*
- 16.10 – 16.30 Discussion